

Analisi di scenario zona Garda

evento del 24 Novembre 2004



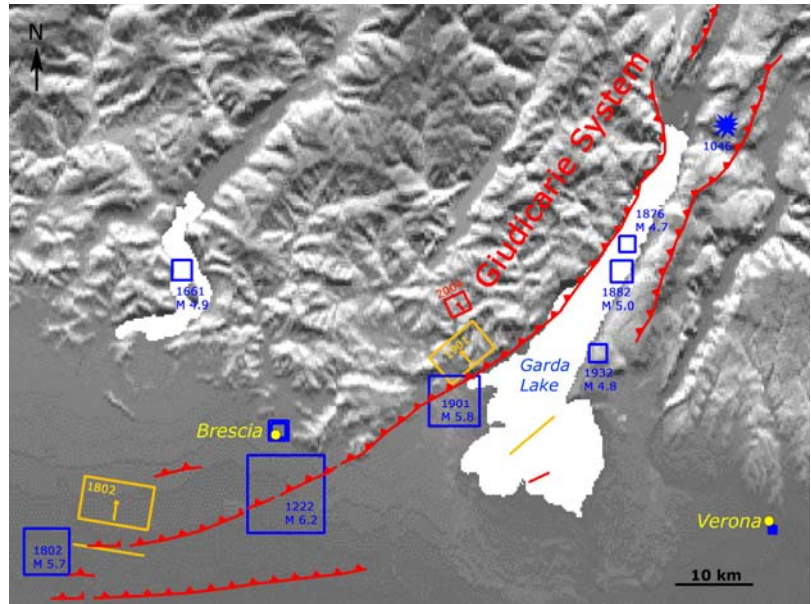
DPC-INGV 2004-2006

La sorgente del terremoto del 24.11.2004

Parametro	Valore	Dati/metodo di stima
Latitudine	45.683	Dati sismologici e geologici
Longitudine	10.529	
Lunghezza	2.6 km	Relazione di Wells & Coppersmith (1994)
Larghezza	2.5 km	
Profondità minima	10 km	Dati sismologici e geologici
Strike	246°	MEDNET (2006) e dati geologici
Immersione	24°	
Rake	113°	
Slip medio	0.3 m	Relationship Kanamori & Anderson (1975)

V. Pessina et al. (2006), Damage distribution and seismological model of the November 2004, Salò (Northern Italy) earthquake, *1st European Conference on Earthquake Engineering and Seismology*, Geneva, Switzerland, Paper Number: 1371

Schema sismotettonico dell'area.



Red hachured line: main thrusts of the *Giudicarie fault system* defined in literature

Red rectangle and red line: surface projection and projected cut-off of the blind fault plane of the 2004 earthquake

Yellow rectangles and yellow lines: surface projections and projected cut-offs of the blind fault planes identified in DISS [DISS Working Group, 2006]

Blue squares: historical earthquakes with date and magnitude [Boschi et al., 2000]

Blue star: epicentral area of the 1046 earthquake [Guidoboni and Comastri, 2005].

Boschi, E., Guidoboni, E., Ferrari, G., Mariotti, D., Valensise, G., Gasperini, P. (2000). Catalogue of Strong Italian Earthquakes, 461 b.C. to 1997, *Annali di Geofisica*, **43**, 609-868.

DISS Working Group (2006). Database of Individual Seismogenic Sources (DISS), Version 3: A compilation of potential sources for earthquakes larger than M 5.5 in Italy and surrounding areas. <http://www.ingv.it/DISS/>, Istituto Nazionale di Geofisica e Vulcanologia.

Guidoboni, E., Comastri, A. (2005). Catalogue of earthquakes and tsunamis in the Mediterranean area from the 11th to the 15th century, Istituto Nazionale di Geofisica e Vulcanologia.